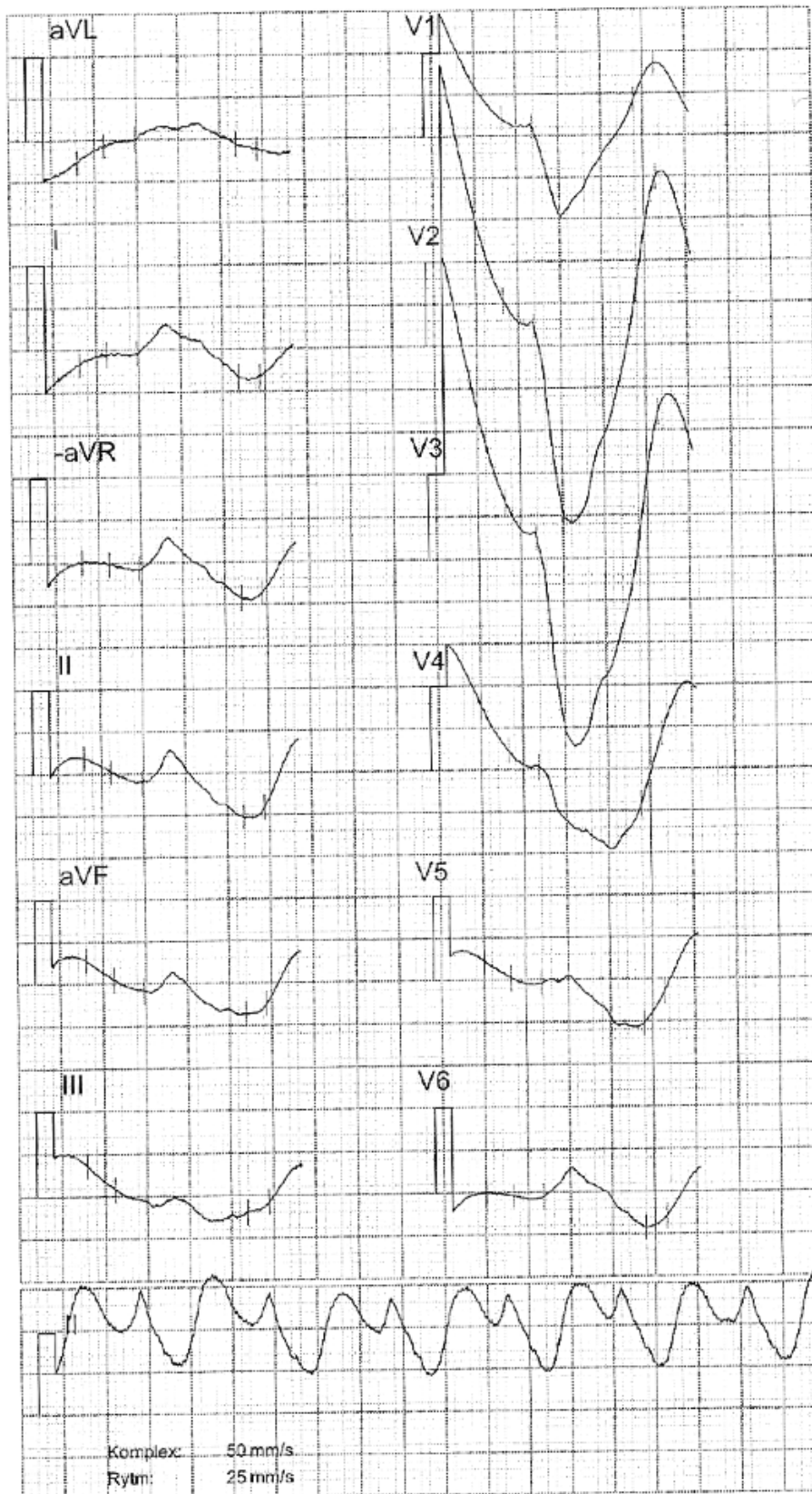


PRETEST 13: INTOXIKATION

Version 190930



Blodgas Värderna			
↓ pH	7,780		[7,350 - 7,450]
↓ pCO ₂	1,91	kPa	[4,60 - 6,00]
↑ pO ₂	19,3	kPa	[8,00 - 13,0]
Elektrolyt Värderna			
↓ cNa ⁺	132	mmol/L	[136 - 146]
↑ cK ⁺	7,0	mmol/L	[3,2 - 4,7]
cCa ²⁺	0,98	mmol/L	
↓ cCl ⁻	96	mmol/L	[100 - 110]
Metabolit Värderna			
↑ cGlu	6,6	mmol/L	[3,6 - 6,2]
↑ cLac	9,4	mmol/L	[0,5 - 1,6]
Oximeter Värderna			
ctHb	132	g/L	
FCOHb	-0,7	%	
rMetHb	1,7	%	
sO ₂	94,8	%	
Beräknade Värderna			
cBase(Ecf) _c	-29,2	mmol/L	
?↓ cHCO ₃ ⁻ (P,st) _c	4,1	mmol/L	[22,0 - 27,0]